

# Qujing Normal University International Student

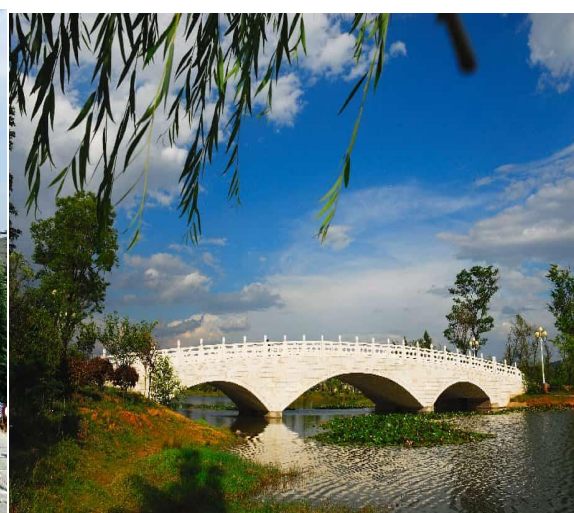
## Recruitment Brochure

### 一、A Brief Introduction

Qujing Normal University is a provincial public institution of higher education located in Qujing City, Yunnan Province. Qujing is a sub-central city celebrated as the “Source of the Pearl River,” the “Kingdom of Ancient Fish,” and the “Hometown of Cuan Culture.”

The university employs over 1,000 faculty and staff and enrolls more than 17,000 full-time students. It offers 60 undergraduate programs across nine major disciplines: Economics, Law, Education, Literature, History, Science, Engineering, Management, and Arts. The university also has three master's degree programs in Education, Materials and Chemical Engineering, and Social Work.

Committed to internationalization, Qujing Normal University is recognized as a “Yunnan Provincial Chinese Language Education Base” and a host institution for the “International Chinese Language Teachers Scholarship.” We actively promote exchanges and cooperation with countries along the “Belt and Road” initiative and have welcomed over 2,000 long-term and short-term international students to date.



### 二、 Study at QJNU

#### 1. Programs and Fees

## 1.1 None-Degree Program

### 1.1.1 Chinese Language & Culture Experience Program (Ages 15–50)

Courses include: Tai Chi, Paper Cutting, Chinese Calligraphy, Ethnic Dance, Folk Music, Traditional Instruments, Kung Fu, and more.

Duration of Study	Fee standard	Contents
15days - 30days	Customized based on agreed content	Includes course activities and local cultural visits; optional external visits are at student's expense.



### 1.1.2 Chinese Language Program (Ages 18–30)

Includes language and culture courses, with classes available from zero beginner to advanced levels.

Duration of Study	Fee standard	Contents
Short-term	(≤ 2 months)	Tuition: ¥3,000 (includes cultural activities & textbooks) + Accommodation: ¥600 (standard dorm).
	Half an academic year	Tuition: ¥4,500 + Accommodation: ¥900.

Duration of Study		Fee standard	Contents
Long-term	One academic year	¥10800	Tuition: ¥9,000 + Accommodation: ¥1,800.



## 1.2 Full-Time Bachelor's Degree Programs (Ages 18–25)



Duration: 3–8 years. Graduates who meet requirements receive a graduation certificate and bachelor's degree..

Discipline	Majors	Annual Fee
Arts & Sports Programs	Musicology, Dance Studies, Broadcasting and Hosting Arts, Fine Arts, Visual Communication Design, Calligraphy, Physical Education, Social Sports Instruction and Management	¥15,800

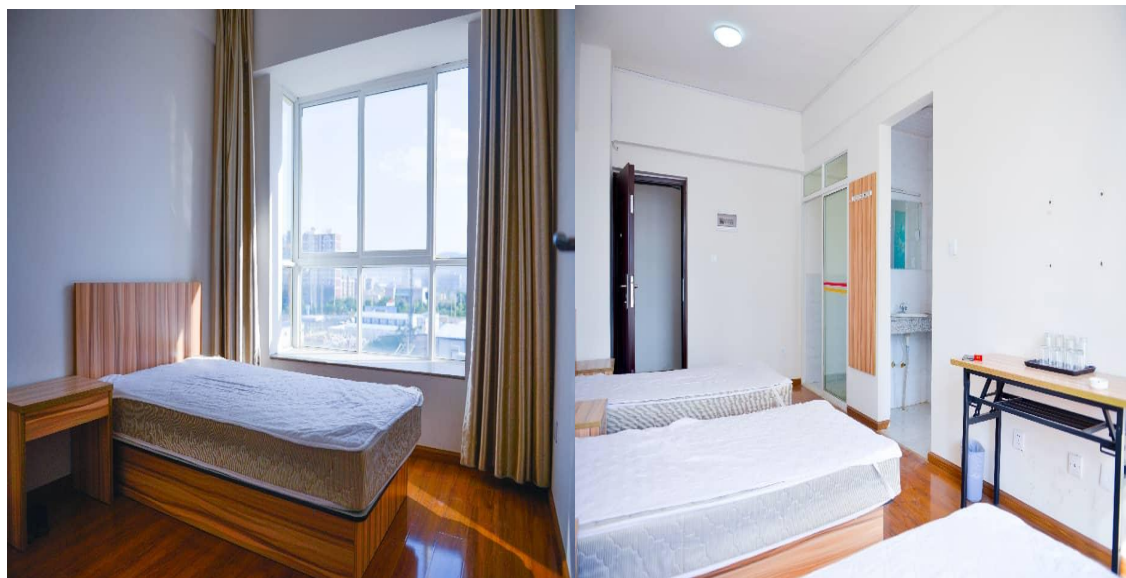
Discipline	Majors	Annual Fee
Science & Engineering	Physics, Chemistry, Engineering, Electronic Information , Artificial Intelligence, Computer Science and Technology, Internet of Things Engineering, Data Science and Big DataTechnology, New Energy Materials and Devices, Pharmaceutical Engineering,Economics, Mathematics and Applied Mathematics, Biological Science and Technology, Food Science and Engineering	¥11,800
Arts/Humanities	International Chinese Education, Chinese Language and Literature, History, Network and New Media, English, Primary Education, Educational Technology, Social Work, Preschool Education, Law, Hospitality Management, Business Administration, Geography, Human Geography and Urban-Rural Planning, Engineering Management, Logistics Management	¥10,800

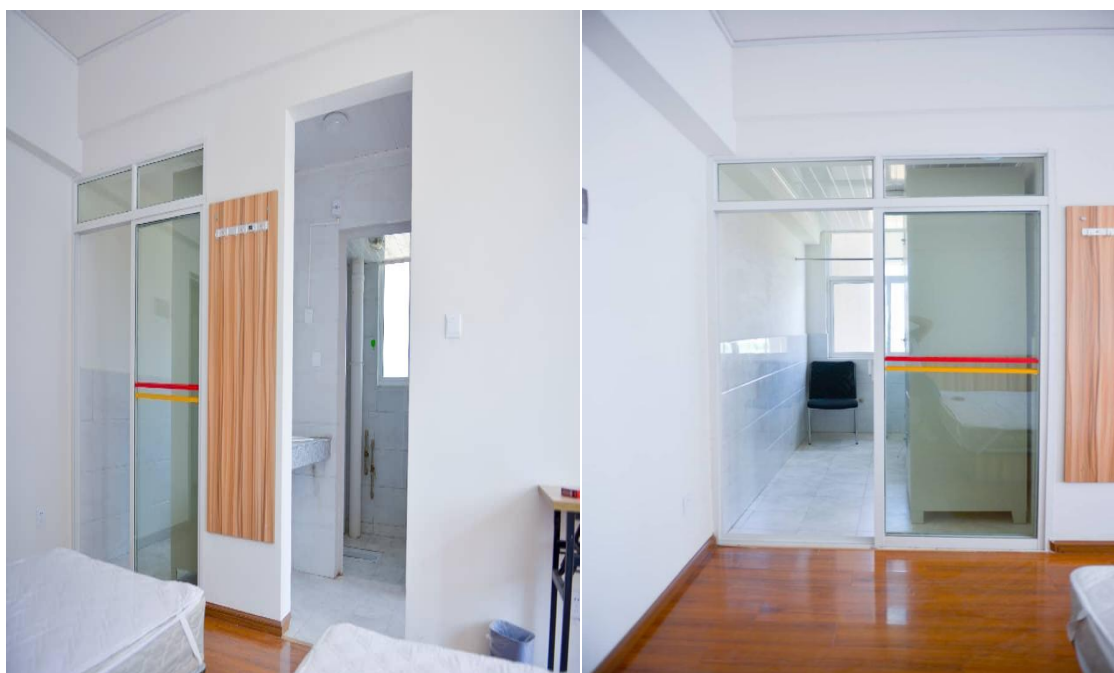
\*Fees include tuition and standard dorm accommodation (¥1,800/year).\*

## 2.Accommodation

International student dormitories are available, with the standard option being a 4-person suite in a “2+2” layout. Other room types may also be available. Each unit includes:

Separate wet/dry bathroom, Laundry and drying area, Single beds, desks, chairs, wardrobes, Essential living facilities





### 3. Scholarship

There are three types of scholarships: Yunnan Provincial Government Scholarship, Chinese Heritage Scholarship and University Scholarship.

Scholarship Type	Eligibility	Benefits (per year)
Yunnan Provincial Government Scholarship	Outstanding students in degree programs	¥30,000 – ¥35,000
Chinese Heritage Scholarship	Outstanding students of Chinese descent in degree programs	¥8,000 – ¥10,000 (up to 3 years)
University Scholarship	Outstanding Chinese language students and degree-program international students	¥2,000 – ¥4,000 (language) / ¥6,000 – ¥10,000 (degree)

## 4. Application Guide

### 4.1、 When and how to apply

Program Type	Application Deadline	How to Apply
Language & Culture Experience	Open year-round	Email materials to: <a href="mailto:qjnu@admissions.cn">qjnu@admissions.cn</a>
Chinese Language / Preparatory	Spring: Dec 31 Fall: Jun 30	Same as above
Full-Time Bachelor's Degree	June 30 each year	Same as above

### 4.2 Required Application Materials (in Chinese or English)

Program Type	Required Documents
Chinese Language & Culture	1. QJNU New Student Information Form 2. Passport first-page copy 3. White-background ID photo ( $\leq 200\text{KB}$ , $\geq 295 \times 413$ px)
Chinese Language / Preparatory	1-3 as above 4. Notarized high school diploma or higher (or pre-graduation certificate) 5. QJNU International Student Application Form 6. Financial Guarantee Letter + guarantor ID+bank statement 7. No Criminal Record Certificate 8. Medical report (within 6 months) 9. Self-introduction video
Full-Time Bachelor's Degree	All above + HSK Level 4 or higher certificate

Notes:

1.Submitted application materials will not be returned.

2.Download application forms at: <https://gjxy.qjnu.edu.cn/channels/11334.html>

### 4.3 Review and Admission

4.3.1 Applicants submit their passport and a self-introduction video for the university's preliminary review. After passing the preliminary review, the university issues a pre-admission notice. The student then pays **a registration fee of 400 RMB** and submits complete application materials for the university's formal review.

4.3.2 Unless there are special circumstances, students will receive the admission or application result within 15 working days after submitting all required materials. If the application is approved, the university will issue the Qijing Normal University Admission Notice for International Students along with either the Short-term International Student Information Form or the Visa Application for Study in China Form (JW202).